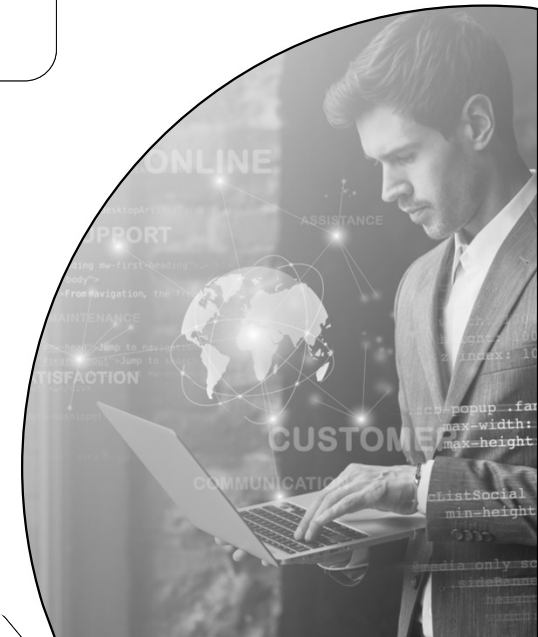




Chapter 1

Introduction to Web Technology





Introduction



Introduction

What is web

The Web is the common name for the World Wide Web, a subset of the Internet consisting of the pages that can be accessed by a Web browser

What is website

A website is a collection of web pages.

A web page may contain texts, graphics, sounds, animations, and movies.

Web pages are developed with the help of a language called Hyper Text Markup Language(HTML). It is also a language of Internet.





Introduction

How is this website made available on the Internet?

These web pages are to be stored in web servers connected to the Internet, to be made available to others.

In order to communicate on the web, computers/devices need to understand each other. This is made possible by making all devices follow the same protocol, namely TCP/IP.





Introduction

In the Internet, there are several types of communication.

- **Websites are accessed using HTTP.**
- **Email communication happens using SMTP.**
- **Internet Protocol provides the basics of communication over Internet.**





Introduction

Essential for Communication over the Internet

- 1. Authentication : is the process of determining whether a computer / server is the computer that it claims to be.**
- 2. Security : it should be provided to communication over Internet so that the messages are not intercepted and modified by hackers.**



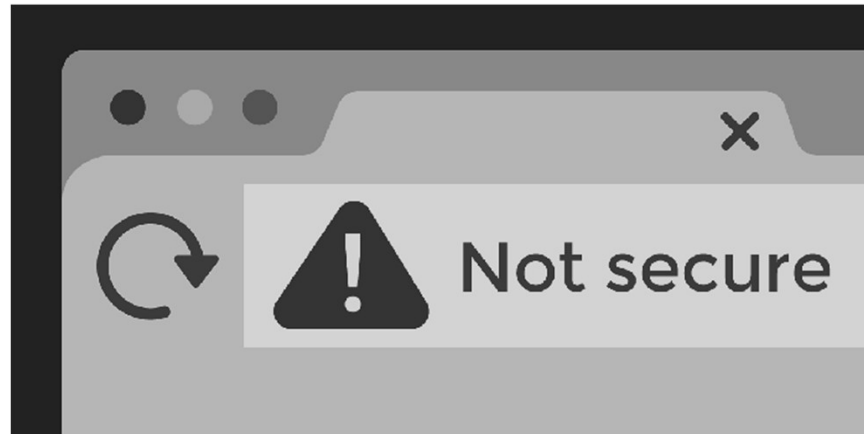


Introduction

HTTP and HTTPS

Hypertext transfer protocol (HTTP) is a protocol or set of communication rules for client-server communication

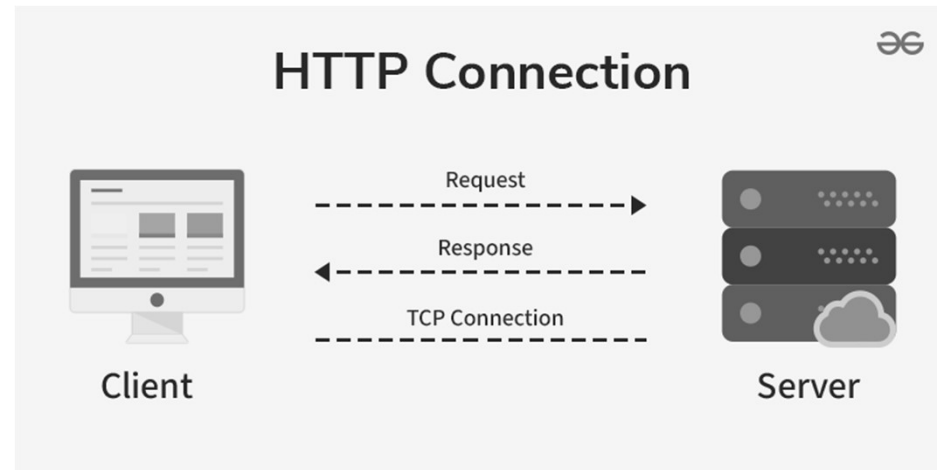
hypertext transfer protocol secure (HTTPS) is a more secure version or an extension of HTTP. In HTTPS, the browser and server establish a secure, encrypted connection before transferring data.



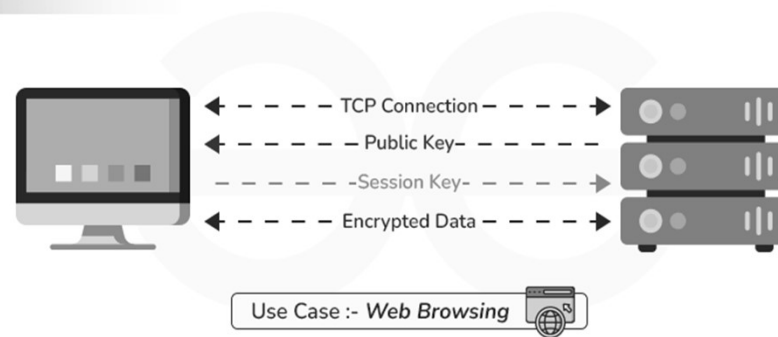


Introduction

HTTP and HTTPS



HTTPS



The background of the slide features a grayscale image of two business people shaking hands. On the left side, there is a vertical grid of squares, with the bottom two columns being 10 squares high and the top two columns being 8 squares high. On the right side, there are several horizontal white bars of varying lengths, some with rounded ends, layered over the handshake image.

THANKS